



**MISSION**

**Partnering with parents in our congregation and community to shine Christ's light on children's lives.**



**St. PAUL'S**  
LUTHERAN SCHOOL

[SCHOOL CALENDAR](#)

[St. Paul's School Website](#)

[March Hot Lunch Calendar](#)

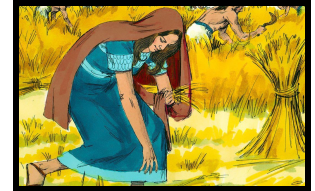
[Contact Information](#)

[SCRIP](#)



**CHRIST LIGHT CONNECTION**

One of the interesting things about reading God's Old Testament is the attention it gives to certain characters who would not normally have been considered significant. Ruth is such a character. She was a widow, a foreigner, a pauper--someone considered very insignificant by the cultural standards of the day. Yet God saw her faith, which drove her to forsake her unbelieving family and nation and the false gods of her youth and follow her mother-in-law's God. And he blessed her richly for it: with food, a new husband, and the blessing of being an ancestor of her Savior.



God also looks for such a faith from us, a faith that forsakes anything that seeks to distract us or tear us away from his Word and the path to heaven.

**ST. PAUL'S EARLY CHILDHOOD EXPANSION - CAPITAL CAMPAIGN**

St. Paul's has begun its capital campaign for an early childhood expansion. The goal is to raise 3 million dollars. This would both fund our addition and retire our debt.

Our ministry expansion includes:

- 1) Four early childhood classrooms
- 2) Large entrance and gathering area
- 3) Indoor Early Childhood Gymnasium



[CLICK HERE](#) to learn more about this ministry opportunity and how to support it!



More than 200 family units have participated in the Growing Forward Cottage meetings. Thank you very much! The Cottage Meeting was 45 minutes of time to absorb an incredible ministry opportunity and think about participating. If you were unable to attend a cottage meeting, you can still participate privately, from the comfort of your own home by clicking the link below.

Why is this so important? It's a chance to further God's Word! As of today, we have 18 enrolled in PreK for next year. (Our cap on enrollment is 20.) We have 13 enrolled in Kindergarten, with four additional families strongly considering. We are still turning away 3 year-olds! We believe the fields are ripe for harvest! Please join

us in this endeavor.

[CLICK HERE FOR COTTAGE MEETING VIDEO](#)

**WORSHIP OPPORTUNITIES THIS WEEK**

**Wednesday - 2/24 Midweek Lenten Worship  
6:30pm at St. Paul's Lutheran Church**

[Livestream Link](#)

**Sunday - 2/28 Worship  
Times: 8:00 & 10:30**

**Sunday School and Adult Bible Class between services**

[Livestream Link](#)

**VOLLEYBALL SEASON**

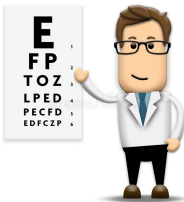
Hope springs eternal! Spring is around the corner and new life will burst forth. More good news - we are hoping to get some things closer to life as we knew it with a spring volleyball season! Practices will start next week (Tuesdays and Thursdays) and run from 3:45-5:15. The A-team will be made up of girls in 7th and 8th grade and our B team this year is open to girls in grades 3-6. Games will generally be on Fridays through April 23rd.

A few guidelines/protocols will be in place for the volleyball season. Remember, our main goal is to keep our school open. So while not all of these will be ideal, following them should help us stay in school. Because of the statewide mandate and WIAA rules, the league is abiding by the mask mandate. That means players will have to wear masks during the games. For home games, we ask that you maintain social distancing in the gym and limit spectators. To that end, we would ask that you only attend the games your child is participating in. To try and discourage crowds from staying and congregating in one place, we will not have the canteen open. The gym will be cleaned after the games. For road games, in order to prevent contact tracing from causing issues, it would be ideal if you did not carpool. If all those protocols have you feeling rather glum, the exciting part is that we get to play volleyball! While not ideal, this will hopefully allow us to not only play, but more importantly, keep school going the rest of the year. Contact Mr. Dais with any questions. Go Flames!



**VISION SCREENING**

The Lion's Club came today to screen all of our students 4K-8th grade. A BIG thanks to them for their concern for our students! Parents will be contacted if there is a recommendation for a further eye test. Please contact the office if you have any questions.



**HOT LUNCH MENU**

The new hot lunch menu is out for the month of March. Please click on the link below to access. Our hot lunch menu is also included via a link on the front page of our newsletter each week. Additionally, menu items can be found on our online school calendar.



[HOT LUNCH MENU - MARCH](#)

**ST. PAUL'S VARIETY SHOW**

The Stewardship committee is excited to present a livestreamed variety show on Friday March 5 @ 6:00 p.m. BUT in order to have a variety show, we need some... VARIETY!

**Ages 6-100:** We're looking for volunteers to show us their talent: singing, dancing, magic tricks, jokes, drawing/painting, playing an instrument, juggling, gymnastics, dog training, double-jointed body contortions, etc. The committee will give you a timeslot to perform live from St. Paul's for all the at-home viewers!



**Kids 5 and under:** Take a video of you presenting a brief show-and-tell of your favorite toy, stuffed animal, pet, etc. Keep the video to under a minute and send it to Mr. C @ [luther.curia@stpaulshowardsgrove.org](mailto:luther.curia@stpaulshowardsgrove.org).

[Sign up with this form](#) . Let's make this an evening to remember! Contact Luther with any questions: 920.287.8575

**We are happy to video your child at school if you need access to a video camera or assistance with the technology. Reach out to Principal Marohn if you would like to have your child's entry video taped at school. Thanks!**

**TAX INFORMATION**

Tax season is quickly approaching and a simple form can help your family deduct up to \$4,000 for K-8 tuition and \$10,000 for 9-12 tuition on state income taxes.

The Wisconsin Department of Revenue has released the 2020 Schedule PS Private School tuition tax deduction form. You can access this form by clicking the [LINK](#).

You will need St. Paul's Federal Employer Identification Number (FEIN) for claiming a deduction for St. Paul's tuition. St. Paul's FEIN; 39-1204930.



**MARRIAGE ENRICHMENT RETREAT**

St. Paul's will be hosting a marriage enrichment retreat at the Osthoff Resort Friday-Saturday, March 19-20. This retreat has a different focus than last year's. Learn how to give your marriage the attention it needs, build connections by taking time with one another, and tune in to each other - all while remaining connected to the Lord and his Word. At the "Distracted Marriage" retreat we'll talk about communication, turning off distractions to your marriage, fighting fair, and listening well. Flyers with event details and registration forms can be found in the member room. You can also register online [HERE](#). Contact Luther Curia with any questions: [luther.curia@stpaulshowardsgrove.org](mailto:luther.curia@stpaulshowardsgrove.org).



**CRAFTS-MEN'S MONTHLY BIBLE STUDY**

Being a man of God in the modern world is difficult: never quite finding the right balance between work/family/friends/personal time in the Word, feeling pressure in the workplace, facing our own inadequacies. Join your brothers in Christ for our first **monthly** Bible Study as we strive to become Craftsmen of God: skilled at navigating the challenges of this world, equipped with God's perfect, unchanging Word. **When:** Thursday, March 11 @ 6:30 p.m.; **Where:** St. Paul's Commons; **What to Bring:** your Bible & 2 bottles/cans of your favorite craft beer (or bottle of wine) to share during the study (optional)



**WISCONSIN PARENTAL CHOICE PROGRAM**

St. Paul's Lutheran School is in the Wisconsin Parental Choice Program (WPCP). This is a program designed to assist families who desire private schooling for their children and meet residency and income requirements. Any student entering 4K, Kindergarten, or 1st grade is eligible to apply through the WPCP. Students transferring in from the public school system, out of state, or a homeschool education, may apply at any grade level.

**Application Window:  
February 1st through April 15th**

Please see the following links below for more information. You are also encouraged to reach out to Mr. Marohn or Mr. Johnson with any and all questions.

[Parent Application Homepage](#)

[Application Process Presentation](#)

[Income Limit Guidelines 2021-2022](#)



**SCRIP - SPECIAL PROMOTION**

Fast Fundraising February: During the month of February, Kwik Trip will be offering a 10% discount on scrip cards. Scrip cards can be purchased during school office hours and in the narthex on Sunday's. There is also BP, Culver's, Festival Foods, Meijer, Menards, Miesfelds, Pick 'n Save, Piggly Wiggly, Walgreens, and Walmart available.



**DID WE FORGET ANYTHING?**

Contact the school office with any questions you might have. 565-3780

